

# LOWE PROPERTY CARE



## UPDATES AT LPC

Our Electrical Maintenance Operative, has been hard at work across a range of projects - bringing his technical expertise and attention to detail to every task.

Recently, he has carried out a major installation at Hopefield Animal Sanctuary, where he fitted a series of LED floodlights throughout the site to improve visibility and safety for staff and visitors. The project required careful planning and precision, ensuring the system was both efficient and reliable - a fantastic example of how we support our community partners with professional, high-quality work.

We have also had our operatives surveying and repairing a residential flat following a massive leak, managing everything from fault-finding to the final fix. The transformation was captured with detailed before and after photos, showcasing our team's commitment to restoring spaces to a safe, functional and high-standard finish.

These recent works highlight the versatility and dedication of our operatives - delivering practical, safe and high-quality solutions across every project we take on.



**BEFORE**



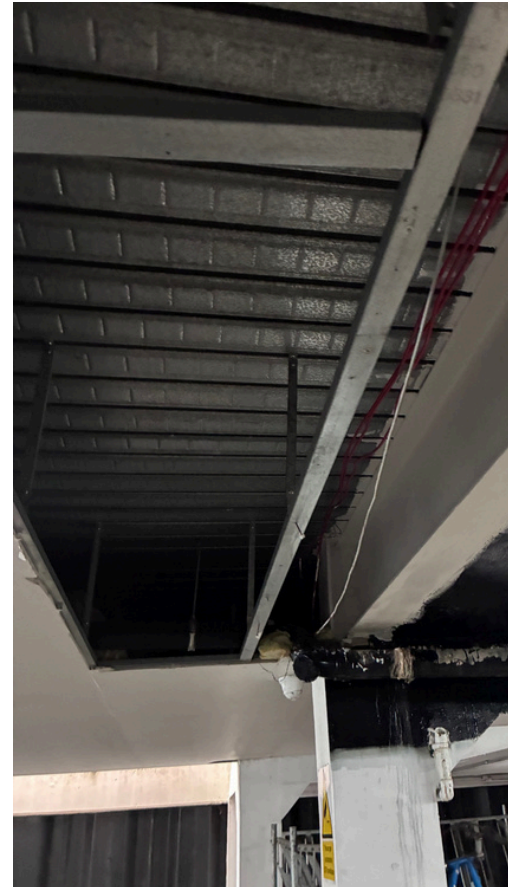
**AFTER**

## Ongoing Works at LPC

Over the past few weeks, our team has been heavily involved in a significant project of fire door remedial works, ensuring each door remains safe, compliant and well protected. These works have included repairing, adjusting and replacing components such as door closers, hinges and seals - all vital parts of a door's ability to perform correctly in the event of a fire. Our operative has been working exceptionally hard each week, checking every door, making the necessary improvements.

This ongoing effort reflects our proactive approach to fire safety and our commitment to maintaining high standards across every site we manage. We've also been completing fire stopping installations.

With our growing experience in this area, Lowe Property Care is now able to offer more fire safety services, including door maintenance, inspections, fire stopping and general remedial works. Our team is continually expanding its knowledge and capability in this vital field, helping clients stay compliant while maintaining the quality and reliability that defines our service.



### Talk To Us

01268 426105

[helpdesk@lowepropertycare.co.uk](mailto:helpdesk@lowepropertycare.co.uk)

Unit 2, Ashtree Farm,  
Boyton Cross,  
Roswell,  
Chelmsford,  
CM1 4LP



Find us on Instagram, Facebook and LinkedIn for continued social media engagement with the work that we do at Lowe Property Care Ltd.