

LOWE PROPERTY CARE



Recent staff achievements:

- Jamie Lowe has successfully completed his Health and Safety in the Workplace qualification.
- Sandra Browne has officially completed her First Aid training.
- Chris Harvey has successfully earned his CSCS certification.

A huge congratulations to them all for their hard work and dedication!

LATEST UPDATES AT LPC

Newest business partner:

We welcome Chris Harvey to the Directors' team here at Lowe Property Care. With years of hands-on experience and a deep understanding of the property maintenance industry, Chris brings valuable knowledge, proven leadership and fresh insights to our growing team.

His commitment to quality service, team development and operational excellence aligns perfectly with our mission here at Lowe Property Care to provide reliable, top-tier care for every property we manage. Please join us in giving Chris a warm welcome as he steps into this important role.

New team members:

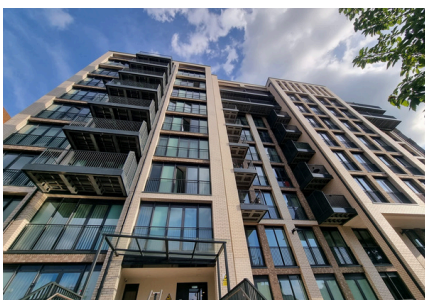
We are pleased to announce that Lowe Property Care is expanding! To continue delivering top-quality service, we have welcomed two new skilled contractors to our team. Their expertise and dedication will help us take on more projects while maintaining the high standards our clients expect.

As we expand, our commitment to reliable, professional property care remains stronger than ever. Stay tuned for more updates and join us in welcoming our new team members!

New services:

We're thrilled to announce that Lowe Property Care is now offering commercial dehumidifier hire! Whether you're dealing with water damage, damp control, or need humidity management for a project, our high-quality dehumidifiers are available to support your business needs.

For more details or to make an inquiry, get in touch with us today!



Helping local communities

At Lowe Property Care, we believe in giving back to the community, which is why we were thrilled to lend a helping hand to Hopefield Sanctuary in Brentwood, a remarkable haven for rescued animals.

Our team performed essential upgrades such as replacing outdated sockets, installing new ones, updating taps and completing various other upgrades to improve safety and efficiency.

Hopefield Sanctuary provides a vital refuge for animals in need, and ensuring their facilities are in top shape is just one way we can support their incredible mission.

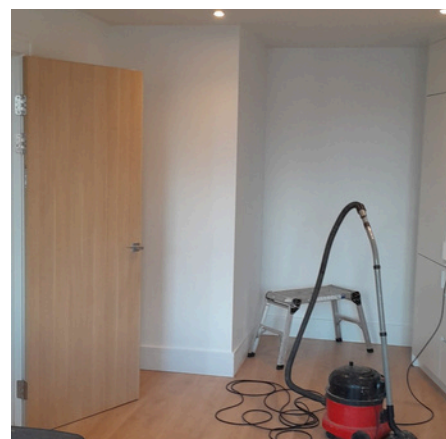
We're proud to contribute to a cause that makes such a difference, and we look forward to continuing to help where we can. A huge thank you to the dedicated team at Hopefield for their hard work and compassion—we're honoured to be a part of their journey!



Repainted the blue container to match, sanded flaking areas.



Old damaged shed removed and new shed supplied and built



Old damaged flooring & skirting boards removed and replaced with matching flooring

Talk to us on:
info@lowepropertycare.co.uk
Little Talbrums Farm, Folkes Lane, RM14 1TH

Find us on Instagram, Facebook and LinkedIn for continued social media engagement with the work that we do at Lowe Property Care Ltd.